

WAYFOO

FLYER EVO

New Era of Intelligent eFoil



Shenzhen Waydoo Intelligence Technology Co., Ltd.

Contact Us:



@Waydoo_Official



@waydoo_tech

Official Website

www.waydoo.com



@waydoo_tech



@Waydoo

For Dealership Inquiries

sales@waydoo.com

New Era of Intelligent eFoil

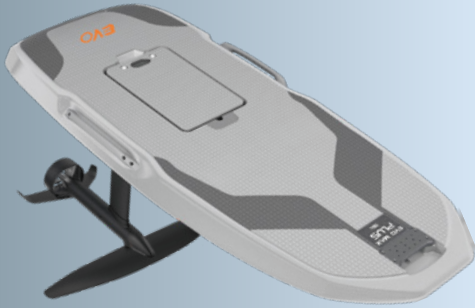
Waydoo Flyer EVO suits all experience levels and riding styles. Equipped with a Smart Flight Assistance System, the eFoil helps riders maintain stability through throttle adjustments. Safety is our top priority. The Flyer EVO features an advanced geofencing system, allowing riders to set a safe riding zone for extra protection.

In addition, its modular design makes it easy to transport and customize, ensuring a versatile eFoiling experience. Riders can also capture incredible moments by mounting an action camera directly onto the Flyer EVO, unlocking even more fun!

At Waydoo, our mission is to make water sports more fun and accessible for everyone. The Flyer EVO is designed to make eFoiling more approachable and exciting. We invite you to experience the thrill of water flying and join us on this innovative journey.



Flyer EVO
Max Plus



Flyer EVO
Lite / Pro Plus



Flyer EVO
Master Plus



Flyer EVO
Max Plus



Flyer EVO
Lite



Flyer EVO
Pro Plus



Flyer EVO
Master Plus



Smart Flight Assistance System



- * You may customize the Flyer EVO modules or select a recommended package.
- * The Flight Assistance System feature can be toggled on or off at your discretion.
- * The specific components included in the package are subject to actual availability.

EVO Max Plus

Sensors

GPS

Smart Flight Assistance System

The 130L Max Plus board offers stability and ease, making it perfect for new riders. Its large size assists in getting up smoothly, ensuring that even novices can quickly start flying. The board is ideal for the whole family to experience the excitement of eFoiling together.



120mins¹
Max. Runtime



45km/h¹
Max. Speed



≤130kg
Ideal Rider Weight



6000W
Max. Motor Output



2300/1800Wh
Battery Capacity



2.1/3.5h²
Charging Time

Specifications

Board	Max Plus 130L	Stabilizer Wing	Gliding Tail 320
Battery	Powerflight Battery 23/18	Stabilizer Wing Extension	Equipped
Propulsion Unit	Propulsion Unit Performance	Charger	Inverter Charger/Powerflight Charger
Mast	69cm (27") Aluminum Alloy Mast	Remote	Equipped
Hydrofoil Wing	Glider C1500/G1500		

*1. Real-life data may vary depending on the eFoil configuration, rider skill level, and water conditions. The test was done without a propeller guard. For safety reasons, we strongly advise using a propeller guard during operation.

*2. The battery charging and operating time may vary based on the battery and charger model. For faster charging, please select the powerflight inverter charger. Powerflight battery 23 charges in 2.1 hours with the inverter charger. Powerflight battery 18 charges in 3.5 hours with the standard charger.



EVO Lite

The EVO Lite is ideal for riders willing to invest in their skills. Its board volume and other performance parameters give riders more room for maneuvering, making it perfect for continuous improvement.



100mins¹
Max. Runtime



36km/h¹
Max. Speed



≤90kg
Ideal Rider Weight



4000W
Max. Motor Output



1800Wh
Battery Capacity



3.5h²
Charging Time

Specifications

Board	Lite 90L	Stabilizer Wing	Gliding Tail 320
Battery	Powerflight Battery 18	Stabilizer Wing Extension	Equipped
Propulsion Unit	Propulsion Unit Standard	Charger	Powerflight Charger
Mast	69cm (27") Aluminum Alloy Mast	Remote	Equipped
Hydrofoil Wing	Glider G1500		

*1. Real-life data may vary depending on the eFoil configuration, rider skill level, and water conditions. The test was done without a propeller guard. For safety reasons, we strongly advise using a propeller guard during operation.

*2. The battery charging and operating time may vary based on the battery and charger model. For faster charging, please select the powerflight inverter charger, charging can be completed in 1.8 hours.



EVO Pro Plus

Sensors

GPS

Smart Flight Assistance System

The Pro Plus board features a Smart Flight Assistance System, designed to support riders of any skill level. Its board volume and other performance parameters ensure greater control for all riders.



120mins¹
Max. Runtime



45km/h¹
Max. Speed



≤130kg
Ideal Rider Weight



6000W
Max. Motor Output



2300/1800Wh
Battery Capacity



2.1/3.5h²
Charging Time

Specifications

Board	Pro Plus 90L	Stabilizer Wing	Gliding Tail 320
Battery	Powerflight Battery 23/18	Stabilizer Wing Extension	Equipped
Propulsion Unit	Propulsion Unit Performance	Charger	Inverter Charger/Powerflight Charger
Mast	69cm (27") Aluminum Alloy Mast	Remote	Equipped
Hydrofoil Wing	Glider C1500/G1500		

*1. Real-life data may vary depending on the eFoil configuration, rider skill level, and water conditions. The test was done without a propeller guard. For safety reasons, we strongly advise using a propeller guard during operation.

*2. The battery charging and operating time may vary based on the battery and charger model. For faster charging, please select the powerflight inverter charger. Powerflight battery 23 charges in 2.1 hours with the inverter charger. Powerflight battery 18 charges in 3.5 hours with the standard charger.



EVO Master Plus

Sensors

GPS

Smart Flight Assistance System

The Master Plus board is crafted from premium Kevlar and features a one-piece molded carbon fiber mast and lightweight CNC-machined fuselage, offering advanced riders the speed, agility, and technical prowess they demand. Known for its exceptional performance, it is also lighter and more stylish.



120mins¹

Max. Runtime



52km/h¹

Max. Speed



≤100kg

Ideal Rider Weight



6000W

Max. Motor Output



2300Wh

Battery Capacity



2.1h²

Charging Time

Specifications

Board	Master Plus 75L	Stabilizer Wing	Surfing Tail 322
Battery	Powerflight Battery 23	Stabilizer Wing Extension	Equipped
Propulsion Unit	Propulsion Unit Elite	Folding Propeller	Equipped
Mast	79cm (31") Carbon Fiber Mast	Charger	Powerflight Inverter Charger
Hydrofoil Wing	Voyager C1100	Remote	Equipped
Board Bag	75L Board Bag		

*1. Real-life data may vary depending on the eFoil configuration, rider skill level, and water conditions. The test was done without a propeller guard. The test was done with the Glider C660 / C1500 and the metal and without a propeller guard.

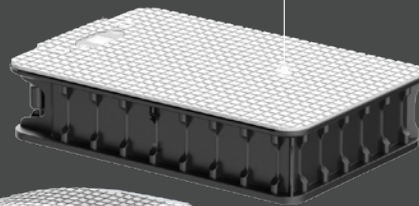
*2. The battery charging and operating time may vary based on the battery and charger model. For faster charging, please select the powerflight inverter charger.



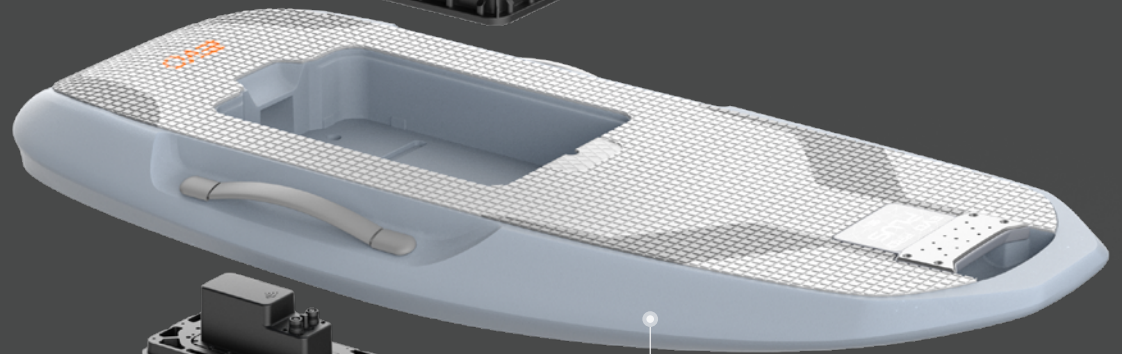
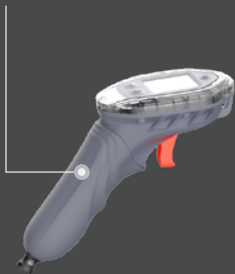
FLYER EVO

Modular Design, Effortless Customization.

Powerflight Battery



Remote

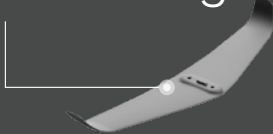


Board



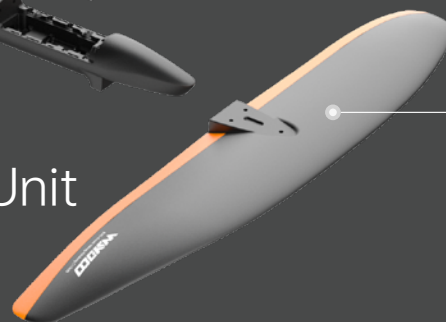
Mast

Stabilizer Wing



Propulsion Unit

Hydrofoil Wing



Board



The Flyer EVO boards (Plus series) integrate multiple sensors and GPS to enable a Smart Flight Assistance System, enhancing the eFoiling experience. The board's nose features a handle, expansion dock, and plaque: the handle improves comfort during prone riding, the expansion dock allows mounting various accessories, and the plaque can be used to affix registration or personalized labels (ensure these do not contain metal to avoid signal interference). The board's tail includes pre-installed mounting holes for the Mover towing wheels or other custom equipment. Boards like the Max Plus and Lite/Pro Plus are made from EPP, reducing impact risks while ensuring safety and ease of maintenance. For those prioritizing lightweight design and style, the Master Plus board is crafted from premium Kevlar.

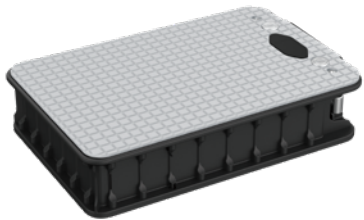


Model	Max Plus 130L	Lite/Pro Plus 90L	Master Plus 75L
Material	EPP	EPP	Kevlar
Weight	13.6kg	9.8/10.6kg	10.5kg
Sensors	Equipped	Not Equipped /Equipped	Equipped
GPS	Equipped	Not Equipped /Equipped	Equipped
Dimensions (LxWxH)	1770x750x155mm	1540x670x150mm	1440x620x150mm

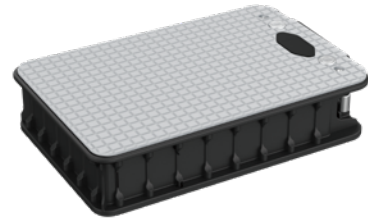
Powerflight Battery



The Flyer EVO offers two battery options: an 1800Wh battery and a larger 2300Wh battery, both crafted from high-quality lithium-ion cells encased in robust aluminum alloy. The lighter 1800Wh battery delivers agile performance on the water, while the 2300Wh option provides extended run time. Both batteries feature an LCD monitor for real-time status updates, are rated IP68 for waterproof protection, and include leak-detection alerts for added reliability. With reverse charging capability, they can also serve as portable power stations when paired with an inverter charger. Optical signal transmission ensures stable communication.



Powerflight Battery 18 (36Ah)



Powerflight Battery 23 (45Ah)

Specifications

Powerflight Battery 18

Battery Type	Lithium-ion
Waterproof Rating	IP68
Capacity	1800Wh
Weight	15.7kg
Max. Voltage	58.4V
Rated Voltage	50.4V
Dimensions (LxWxH)	435x288x91mm

Powerflight Battery 23

Battery Type	Lithium-ion
Waterproof Rating	IP68
Capacity	2300Wh
Weight	17.5kg
Max. Voltage	58.4V
Rated Voltage	50.4V
Dimensions (LxWxH)	435x288x91mm

Mast



The EVO's mast features built-in multicolor LED lights that you can customize with the remote control. Choose from various modes and colors to create a stunning visual experience. Shine bright and make a statement on the water as the ultimate trendsetter!

19" Mast



Suitable for low-speed towing and rescue, providing stable and safe control when towing equipment, flotation devices, or emergency rescue tasks.

- Weight: 3kg
- Mast Height (H): 490mm
- Material: Aluminium Alloy
- Dimensions (L×W×H): 490×246×104mm

27" Mast



Suitable for novice riders seeking stability and ease of control.

- Weight: 3.6kg
- Mast Height (H): 690mm
- Material: Aluminium Alloy
- Dimensions (L×W×H): 690×246×104mm

31" Mast Carbon



Full carbon fiber construction for minimal weight and smooth carving, providing riders with the most nimble eFoiling experience.

- Weight: 2.7kg
- Mast Height (H): 790mm
- Material: Carbon Fiber
- Dimensions (L×W×H): 790×246×104mm

35" Mast



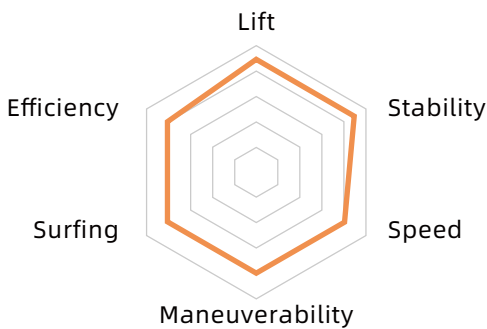
Suitable for seasoned riders seeking higher maneuverability and flight height.

- Weight: 4.1kg
- Mast Height (H): 890mm
- Material: Aluminium Alloy
- Dimensions (L×W×H): 890×246×104mm



Wing

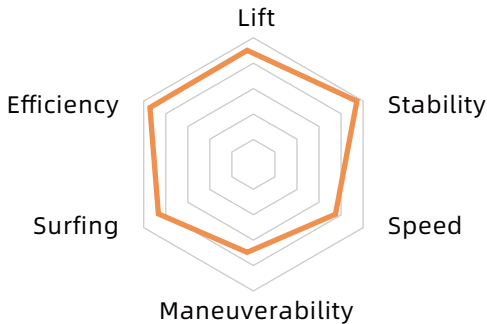
Voyager G1500/C1500



Slow speed and high stability, suitable for beginner riders practicing carving and wave-riding techniques in calm waters and small waves.

- **Material:** Carbon Fiber/Fiberglass
- **Area:** 1642cm²
- **Span:** 76.5cm
- **Aspect Ratio:** 4.2
- **Weight:** 1.5kg/1.7kg

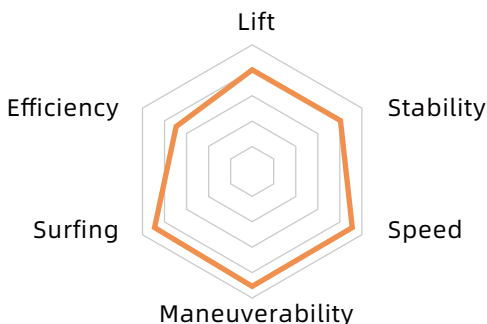
Glider G1500/C1500



The area is close to the Voyager 1500, with lower resistance to further boost flight efficiency. Carefully designed dihedral ensures stability in straight flight and better turn controllability, which is ideal for long-distance eFoiling.

- **Material:** Carbon Fiber/Fiberglass
- **Area:** 1440cm²
- **Span:** 92cm
- **Aspect Ratio:** 5.8
- **Weight:** 1.5kg/1.7kg

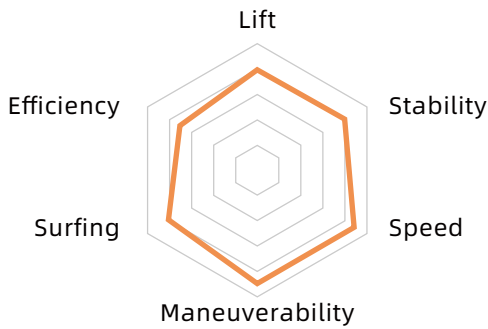
Voyager G1100/C1100



Compact in size, suitable for advanced riders. Offers high maneuverability and sufficient stability, with enhanced linear flight and responsive turning feedback.

- **Material:** Carbon Fiber/Fiberglass
- **Area:** 1099cm²
- **Span:** 63.8cm
- **Aspect Ratio:** 4.1
- **Weight:** 1.1kg/1.3kg

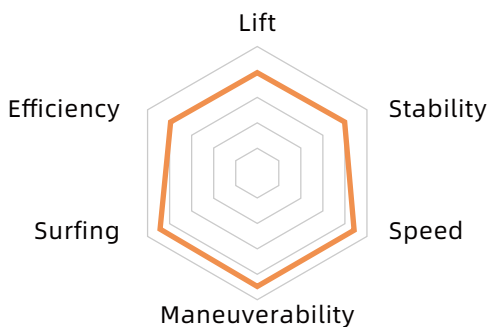
Voyager 1300



It is an all-rounded wing providing smooth riding for experienced riders looking for speed. It is well balance in between stability and maneuverability. Because of that it is definitely a perfect long-term companion for you to experience diverse foiling environments

- **Material:** Carbon Fiber
- **Area:** 1330cm²
- **Span:** 85cm
- **Aspect Ratio:** 5
- **Weight:** 1.5kg

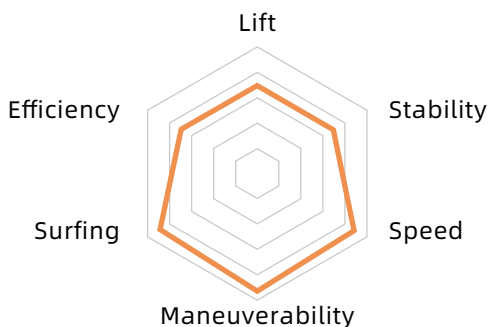
Gliding 1100



It is the all-round wing giving you both the stability and the maneuverability, which can easily help you get to the next level up from the Gliding 1500.

- **Material:** Carbon Fiber
- **Area:** 1100cm²
- **Span:** 78cm
- **Aspect Ratio:** 4.8
- **Weight:** 1.1kg

Gliding Pro 1100



Brand new design in edging up tip, provides a lot of freedom to ride in freestyle. Also trust worthy in carving and steep turning.

- **Material:** Carbon Fiber
- **Area:** 1100cm²
- **Span:** 85cm
- **Aspect Ratio:** 6
- **Weight:** 1.1kg

Stabilizer Wing

Gliding Tail 320



- **Material:** PA6 + Fiberglass
- **Area:** 320cm²
- **Span:** 39cm
- **Aspect Ratio:** 4.7
- **Weight:** 0.2kg

The wing profile has been upgraded to a more efficient NACA profile. Upturned wingtips enhance lateral stability, with reduced installation angles ensuring a more comfortable stance when turning on waves.

Surfing Tail 322



- **Material:** Carbon Fiber
- **Area:** 320cm²
- **Span:** 39cm
- **Aspect Ratio:** 4.7
- **Weight:** 0.3kg

The upgraded carbon fiber version of the Tail 320, known for its extreme rigidity, provides superior control and greater stability.

Propulsion Unit



The standard propeller, featuring a high-efficiency design, a shroud, and a protective cover, effectively meets diverse user needs. The folding propeller excels in efficiency and power, making it particularly suitable for agile maneuvers in wave-rich areas. It performs especially well with a smaller board and a longer mast. The jet drive option, on the other hand, prioritizes safety and smooth power delivery, making it an excellent choice for beginners due to its stability and steady water exit.



Propulsion Unit Standard

- Motor Output: 4000W
- Material: Aluminium Alloy (Die Cast)
- Dimensions (LxWxH): 610x167x199mm



Propulsion Unit Performance

- Motor Output: 6000W
- Material: Aluminium Alloy (Die Cast)
- Dimensions (LxWxH): 675x167x199mm



Propulsion Unit Elite

- Motor Output: 6000W
- Material: Aluminium Alloy (CNC)
- Dimensions (LxWxH): 665x167x199mm

Mover



The Mover is a versatile set of wheels compatible with 130L and 90L boards. Designed with fat and durable wheels, it's perfect for navigating sandy and rough terrain, making transporting your Flyer EVO effortless.



Mover-S



Mover-L

Specifications

Mover-S

Weight	1.6kg
Material	Aluminium Alloy
Dimensions (D×H)	φ178×745mm
Mounting Hole Spacing	140mm
Applicable Board	lite/Pro Plus 90L

Mover-L

Weight	1.8kg
Material	Aluminium Alloy
Dimensions (D×H)	φ178×869mm
Mounting Hole Spacing	140mm
Applicable Board	Max Plus 130L

Powerflight Charger / Powerflight Inverter Charger

The Waydoo Flyer EVO offers two chargers with different power capacities. The 600W charger is lightweight and portable, ensuring convenience for on-the-go charging. Meanwhile, the 1500W inverter charger, when paired with the Powerflight battery, serves as a power source for other devices. Notably, it allows users to customize AC output voltage and frequency, providing flexibility in power management.



**Powerflight Inverter
Charger**

Specifications

	Charging	Inverter
Input Voltage	90~264V AC	40~59V DC
Input Frequency	47~63Hz	50~60Hz
Max. Output Voltage	58.8V DC	240V AC
Max. Continuous Output Power	1500W	1500W
Max. Instantaneous Output Power /		2600W@2S
Max. Charging Current	30A	
Dimensions (L×W×H)	266×141×44mm	
Weight	3.9kg	

Adaptive inverter output:

When paired with a Powerflight battery, the high-performance inverter charger can invert and adaptively output corresponding AC voltage and frequency based on different standard AC sockets.



**Powerflight
Charger**

Specifications

Input Voltage	100~240V AC
Input Frequency	47~63Hz
Max. Output Voltage	58.8V
Max. Input Power	800W
Max. Output Power	588W
Max. Charging Current	10A
Dimensions (L×W×H)	237×104×58mm
Weight	1.8kg

Remote



The EVO remote features a new, intuitive user interface that offers richer information and simplifies control settings. It includes both day and night modes for clear and comfortable viewing anytime. Quick Bluetooth pairing enables easy switching between multiple EVO eFoils. To avoid accidental battery drain, you can set an auto shut-off time in case you forget to turn off the eFoil. With 150% more pull length, the upgraded trigger enhances throttle control for precise handling. A larger battery capacity provides extended use. The silicone-padded wrist strap ensures a comfortable and secure fit, reducing slippage. Additionally, it includes an alloy key for convenient battery locking and unlocking. An integrated magnetic key in the remote handle ensures smooth eFoil battery control.



Remote

Specifications

Trigger Pull Length	21mm	Transmission Method	BLE
Runtime	11h	Waterproof Rating	IP68
Charging Time	2h (5V/2A Charger)	Dimensions (LxWxH)	153x59x118mm
Charging Method	Magnetic USB Charging Cable		

Propulsion Option

The standard propeller, featuring a high-efficiency propeller, a shroud, and a protective cover, meets diverse user needs effectively. The folding propeller excels in efficiency and power, particularly suitable for agile maneuvers in wave-rich areas, especially with a smaller board and longer mast. Meanwhile, the jet drive option prioritizes safety and smooth power delivery, making it an excellent choice for beginners due to its stability and steady water exit.



Jet Drive



Folding Propeller

Specifications

Weight	1.1kg
Material	Aluminium Alloy
Dimensions (D×H)	φ114×173mm

Specifications

Weight	0.3kg
Material	Aluminium Alloy
Dimensions (D×H)	φ140×65mm

Scooter Kit

Transform your eFoiling experience with the EVO Scooter Kit, which adds a scooter attachment to your 130L and 90L boards. This kit comes with a handlebar that easily attaches to the board's nose, providing exceptional stability and control.



Scooter Kit

Outboard Kit

Though not a new concept, Waydoo sets itself apart by offering the EVO Outboard Kit, allowing the conversion of the Powerflight battery and propulsion unit into a functional outboard motor. This capability extends the Waydoo Flyer EVO's utility, enabling it to propel small watercraft for a diverse range of aquatic activities.



Outboard Kit



WAYDOO

FLYER EVO

New Era of Intelligent eFoil



Shenzhen Waydoo Intelligence Technology Co., Ltd.

Contact Us:



@Waydoo_Official



@waydoo_tech



@waydoo_tech



@Waydoo

Official Website: www.waydoo.com

For Dealership Inquiries: sales@waydoo.com